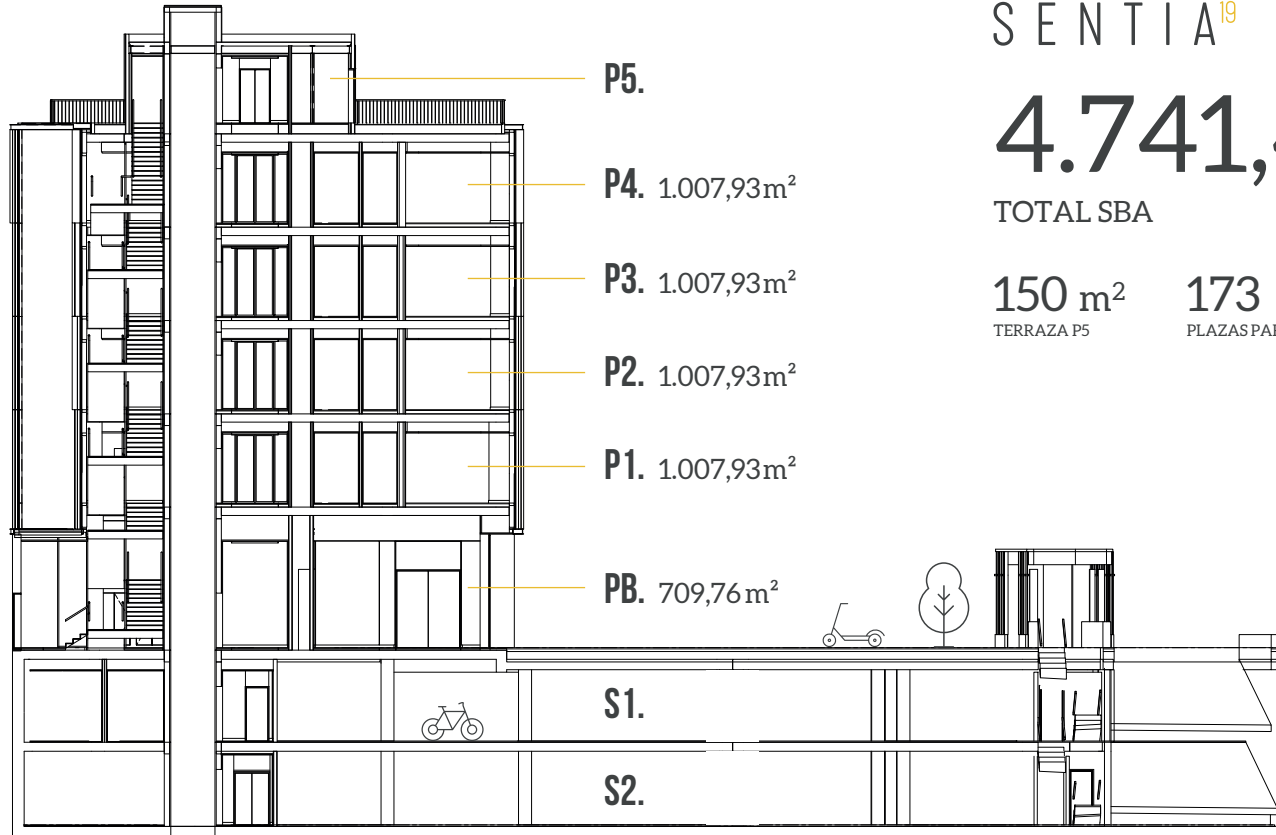




SENTIA¹⁹⁻²¹

JULIÁN CAMARILLO, 19-21
- MADRID -

SUPERFICIES Y DISPONIBILIDAD



SENTIA¹⁹

4.741,47m²

TOTAL SBA

150 m²
TERRAZA P5

173
PLAZAS PARKING S1+S2

SUPERFICIES Y DISPONIBILIDAD



SENTIA²¹

7.558 m²

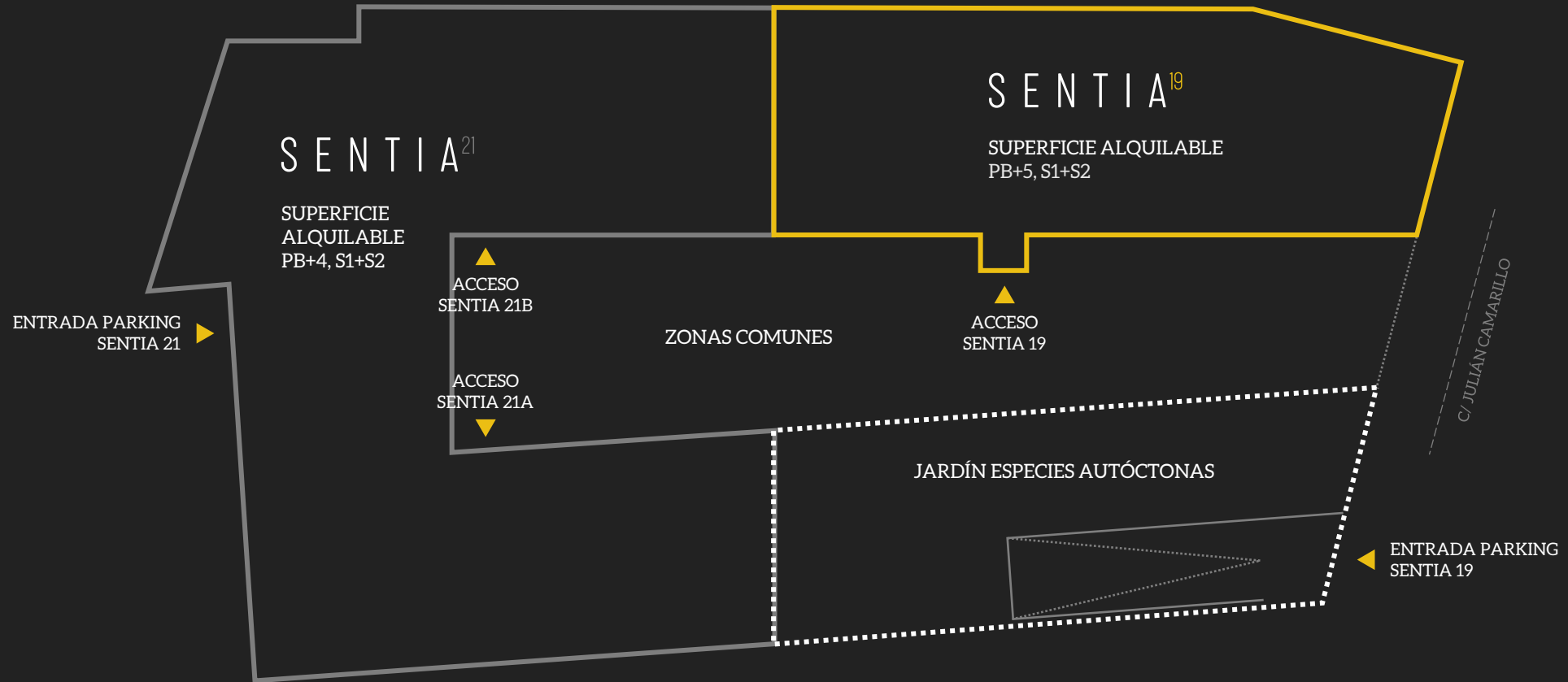
TOTAL SBA

186

PLAZAS PARKING S1+S2

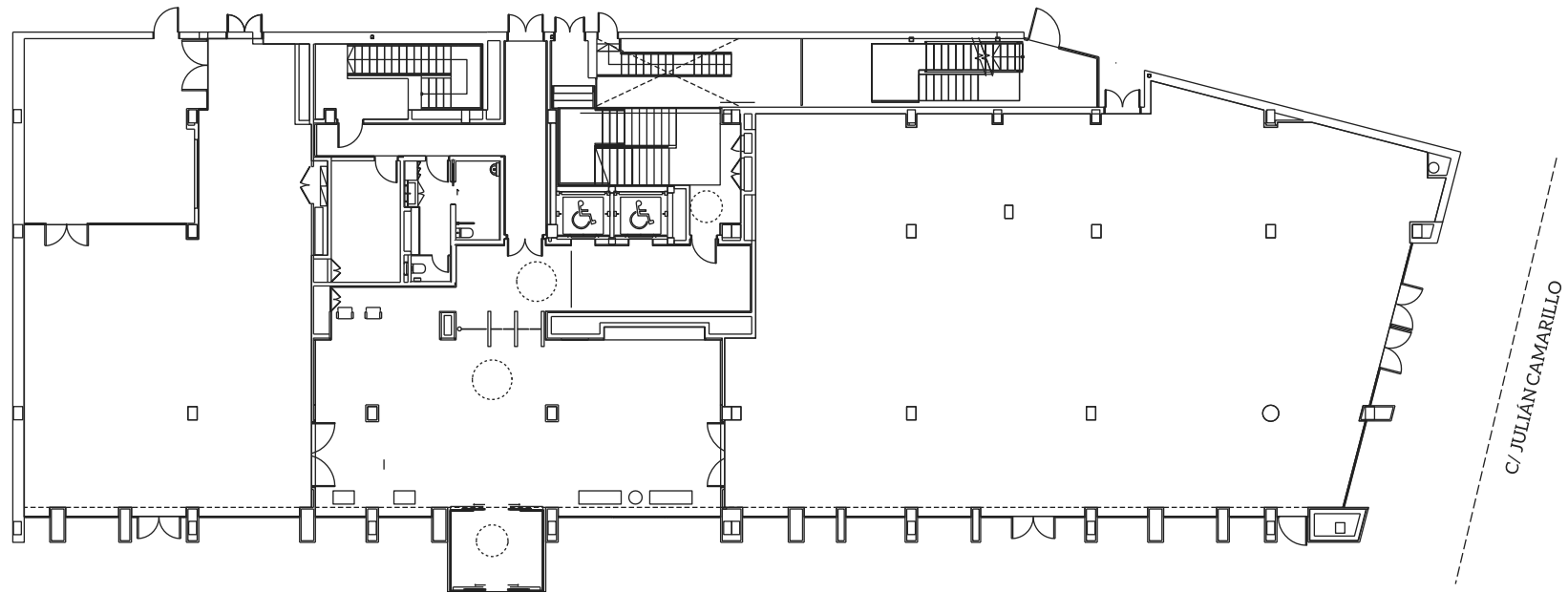
PLANOS

PLANO GENERAL



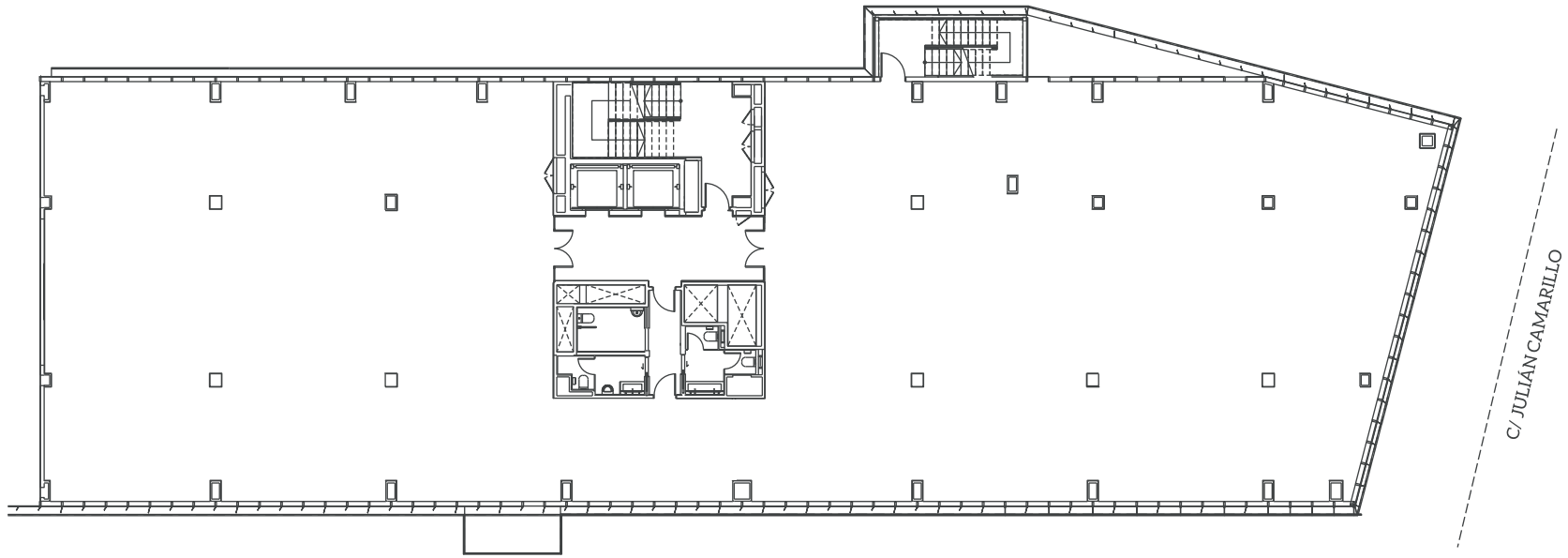
PLANOS SENTIA 19

PLANTA BAJA
750,17 m²



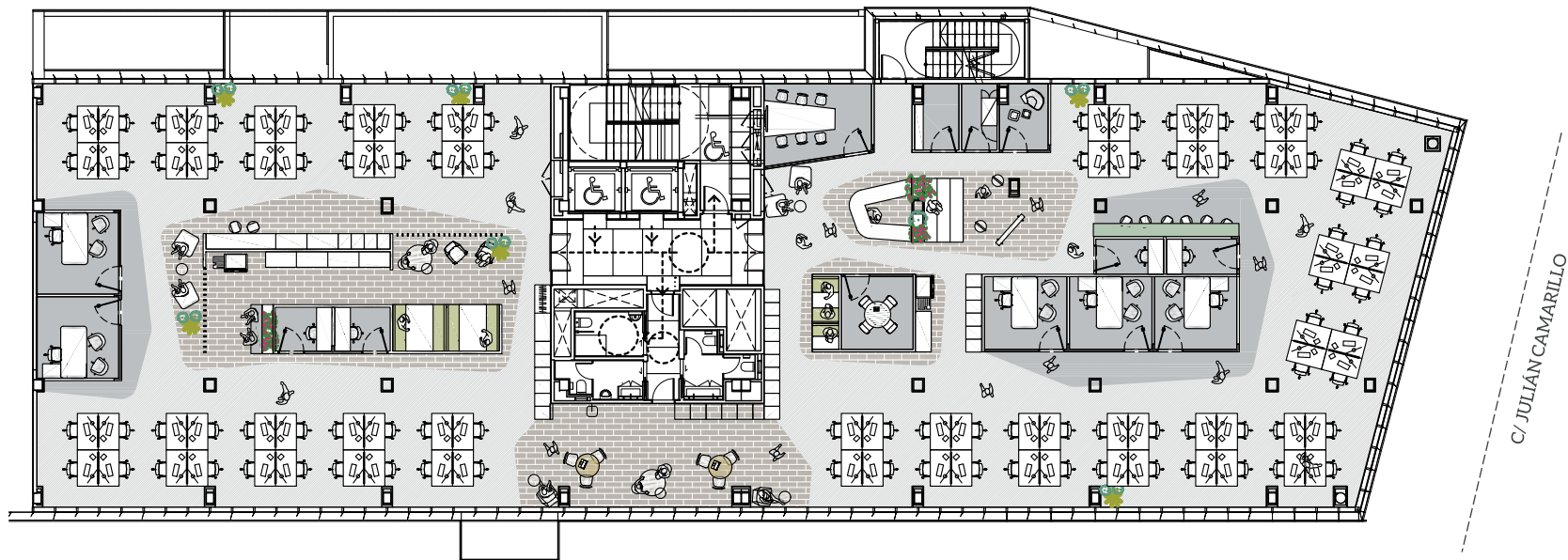
PLANOS SENTIA 19

PLANTAS 1-4
1.007,93m²



PLANOS SENTIA 19

PLANTAS 1-4
CON IMPLANTACIÓN
1.007,93m²



PLANOS SENTIA 21

PLANTAS 1-4
1.889,70 m²



PLANOS SENTIA 21

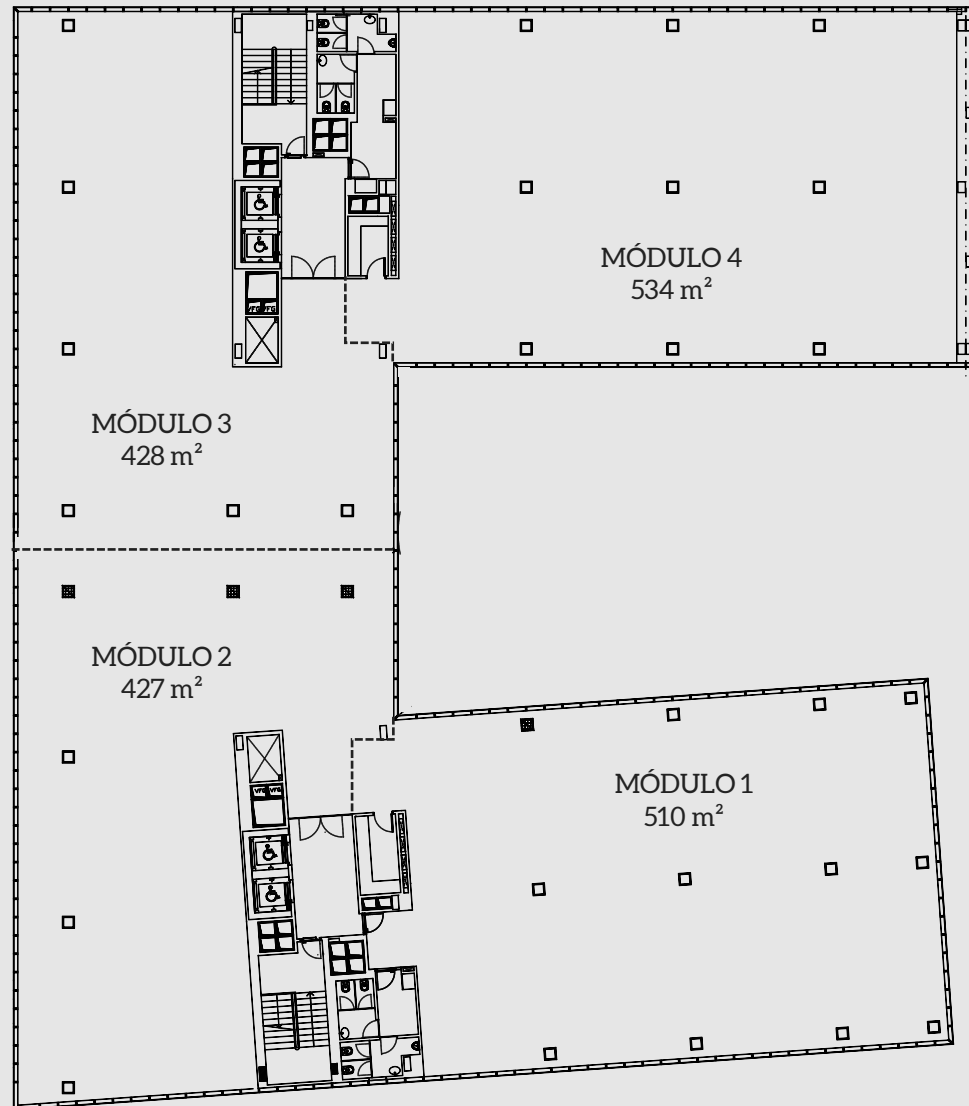
PLANTAS 1-4
CON IMPLANTACIÓN 1 MÓDULO
1.889,70 m²



C/ JULIAN CAMARILLO

PLANOS SENTIA 21

PLANTAS 1-4
1.889,70 m²



WWW.SENTIAMADRID.COM



Comercializa

CBRE

spain.oficinasmadrid@cbre.com

+34 91 598 19 00

Asset Management



40° 26' 3.8227" N, 3° 37' 49.3478" W

